

Mini-LED Display Module

Features:

- High Brightness Level from 1,000 to 5,000 nits
- Display Size Available from 5" to 65"
- High Contrast Ratio: 100,000:1
- Lower Power Consumption: Reduced by 30% to 50%
- Sunlight Readable

Part number: EB101-ME3-2214A-90

Product description: 10.1" Mini-LED FALD Display Module

Local dimming zone: 384 zones

Brightness: 9,000 nits

LCD: a-Si TFT

Resolution: 1920x1200px, normally black

Viewing Angle: 85/85/85/85, CR \geq 10

Color depth: 16.7 M

Interface: HDMI

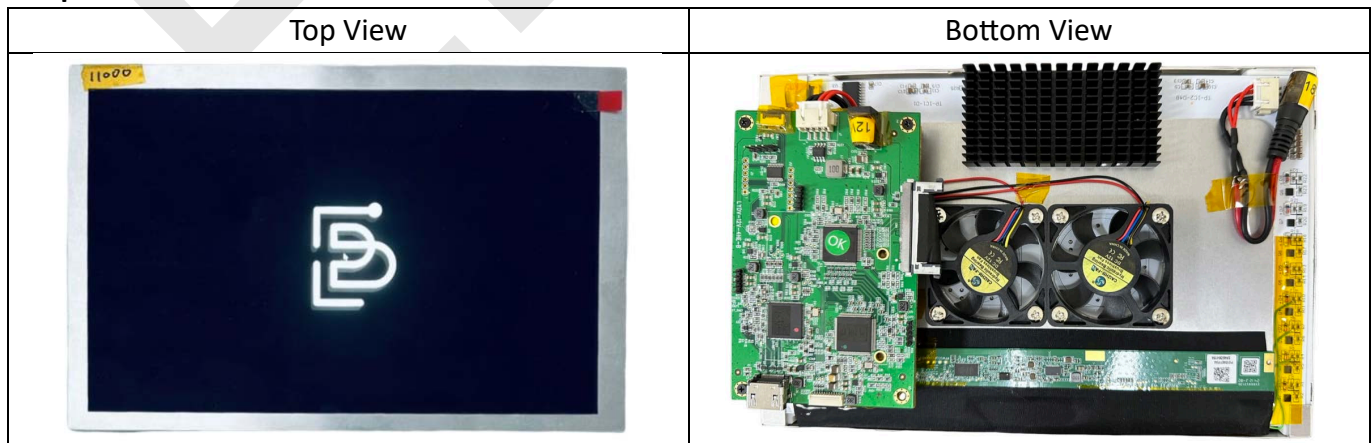
Operating temperature: -20°C ~ 70°C

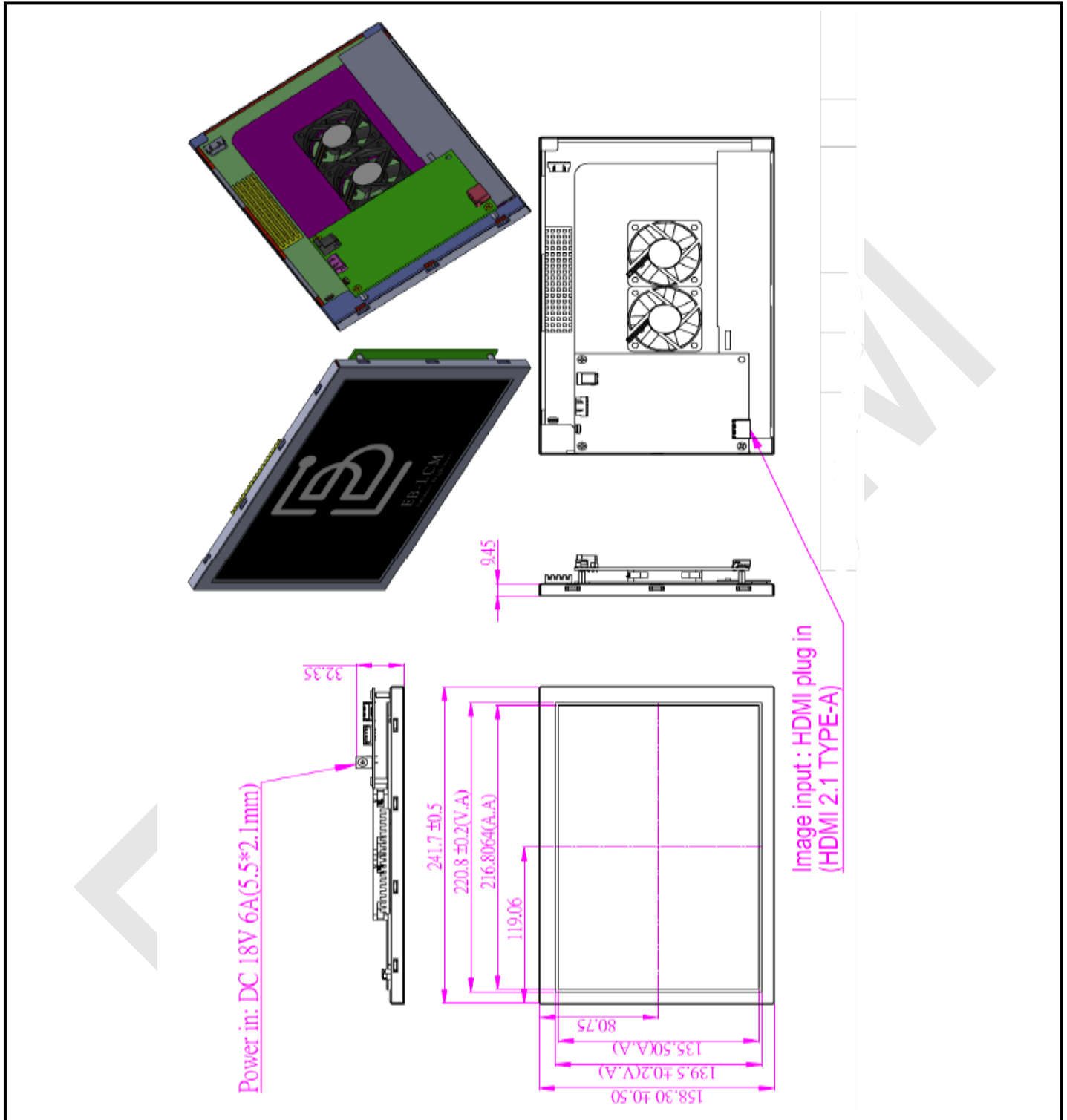
Storage temperature: -30°C ~ 80°C

Product profile



Perspective view





Note on Intelligent Protection Mechanism: This module is equipped with a proactive Over Temperature Protection (OTP) system. For Average Picture Level (APL) exceeding 70% for more than 240 seconds, brightness will adjust gradually (10% every 30s) to safeguard internal components. Recovery to 100% brightness is automatic once APL drops below 60%. This mechanism is a standard safety feature to ensure the LCM's extended lifespan and consistent performance under varying usage scenarios.