

## Mini-LED Display Module

### Features:

- High Brightness Level from 1,000 to 5,000 nits
- Display Size Available from 5" to 65"
- High Contrast Ratio: 10,000:1
- Lower Power Consumption: Reduced by 30% to 50%
- Sunlight Readable

**Part number:** EB101-ML5-2214A-20

**Product description:** 10.1" Mini-LED Embedded LCD Module

Local dimming zone: 576 zones

Brightness: 2000 nits

LCD: IPS

Resolution: 1920 x 1080 px, Normally Black

Viewing Angle: 80 / 80 / 80 / 80 (Typ.), CR > 10

Color depth: 16.7M

Power consumption: 25 watt max.

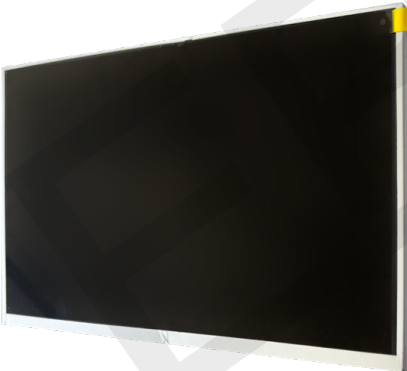
Interface: LVDS

Operating temperature: -20°C ~ 80°C

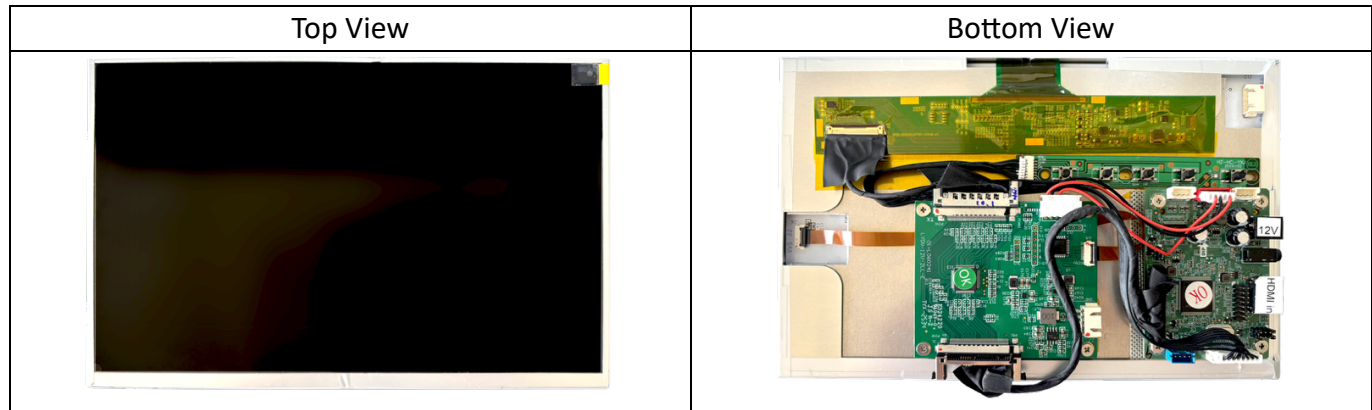
Storage temperature: -30°C ~ 80°C

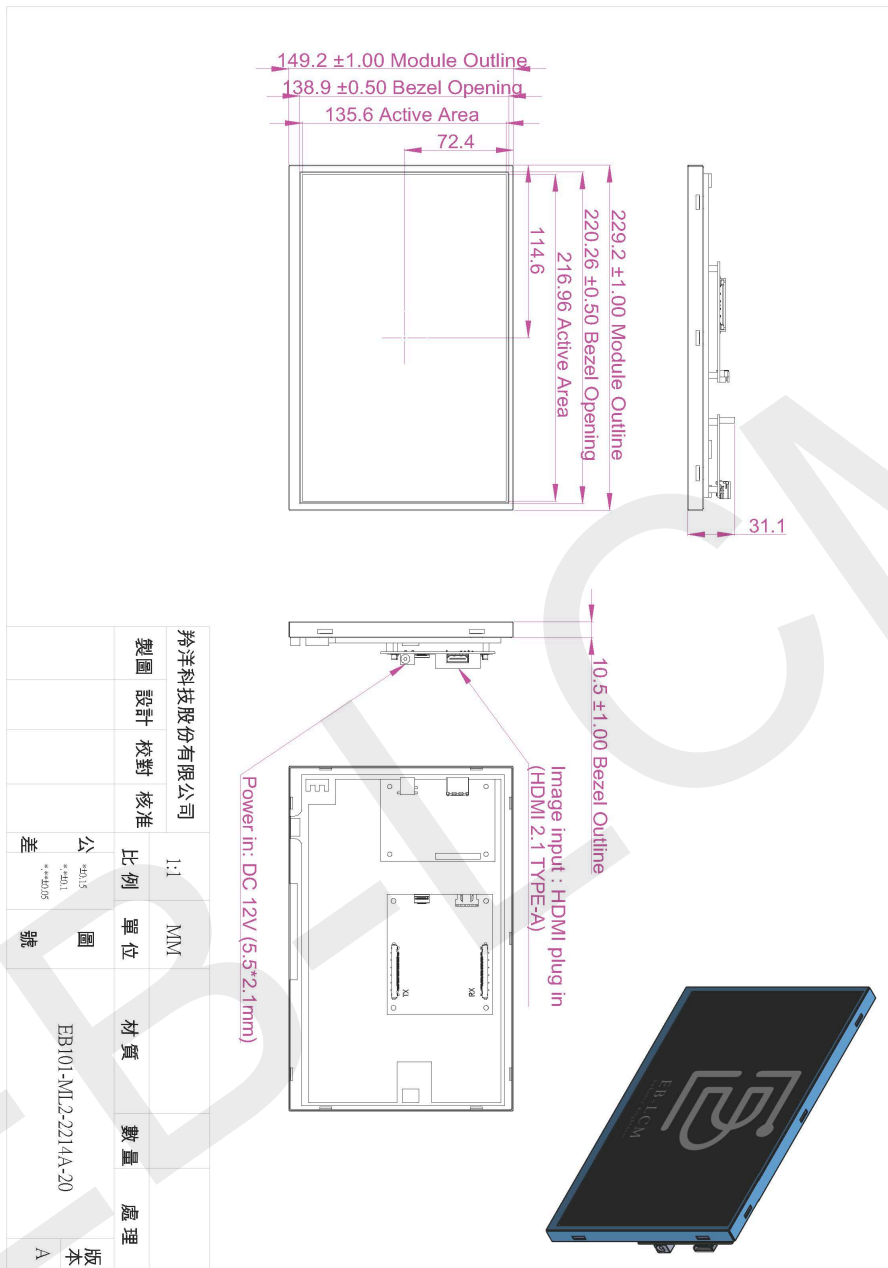
Optional components: OSD Keypad / Light Sensor / AD Board / Adapter

### Product profile

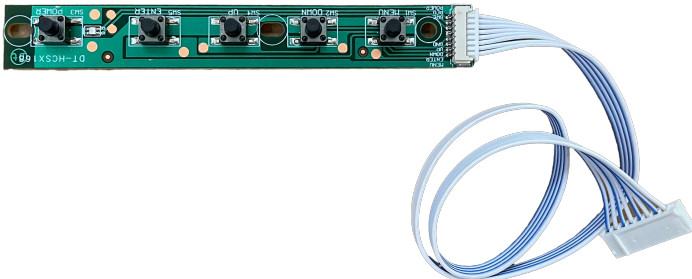


### Perspective view

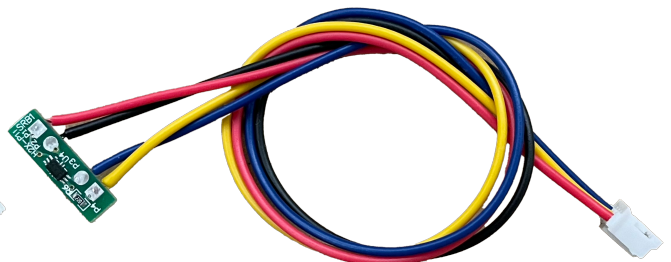




### Optional Components



OSD Keypad



Light Sensor