

## Mini-LED Display Module

### Features:

- High Brightness Level from 1,000 to 5,000 nits
- Display Size Available from 5" to 65"
- High Contrast Ratio: 100,000:1
- Lower Power Consumption: Reduced by 30% to 50%
- Sunlight Readable

**Part number:** EB070-MR3-1610A-40

**Product description:** 7" Mini-LED FALD Display Module

Local dimming zone: 384 zones

Brightness: 4000 nits

LCD: TN

Resolution: 800x480px, normally white

Viewing Angle: 70/70/70/60 (Typ.), CR≥10

Color depth: 16.7 M

Interface: HDMI

Operating temperature: -20°C ~ 70°C

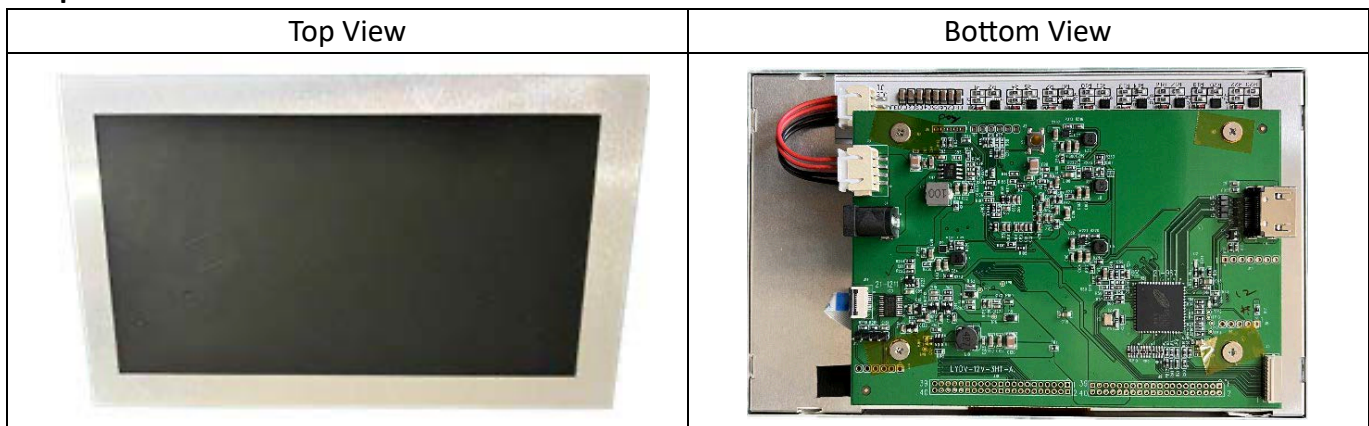
Storage temperature: -30°C ~ 80°C

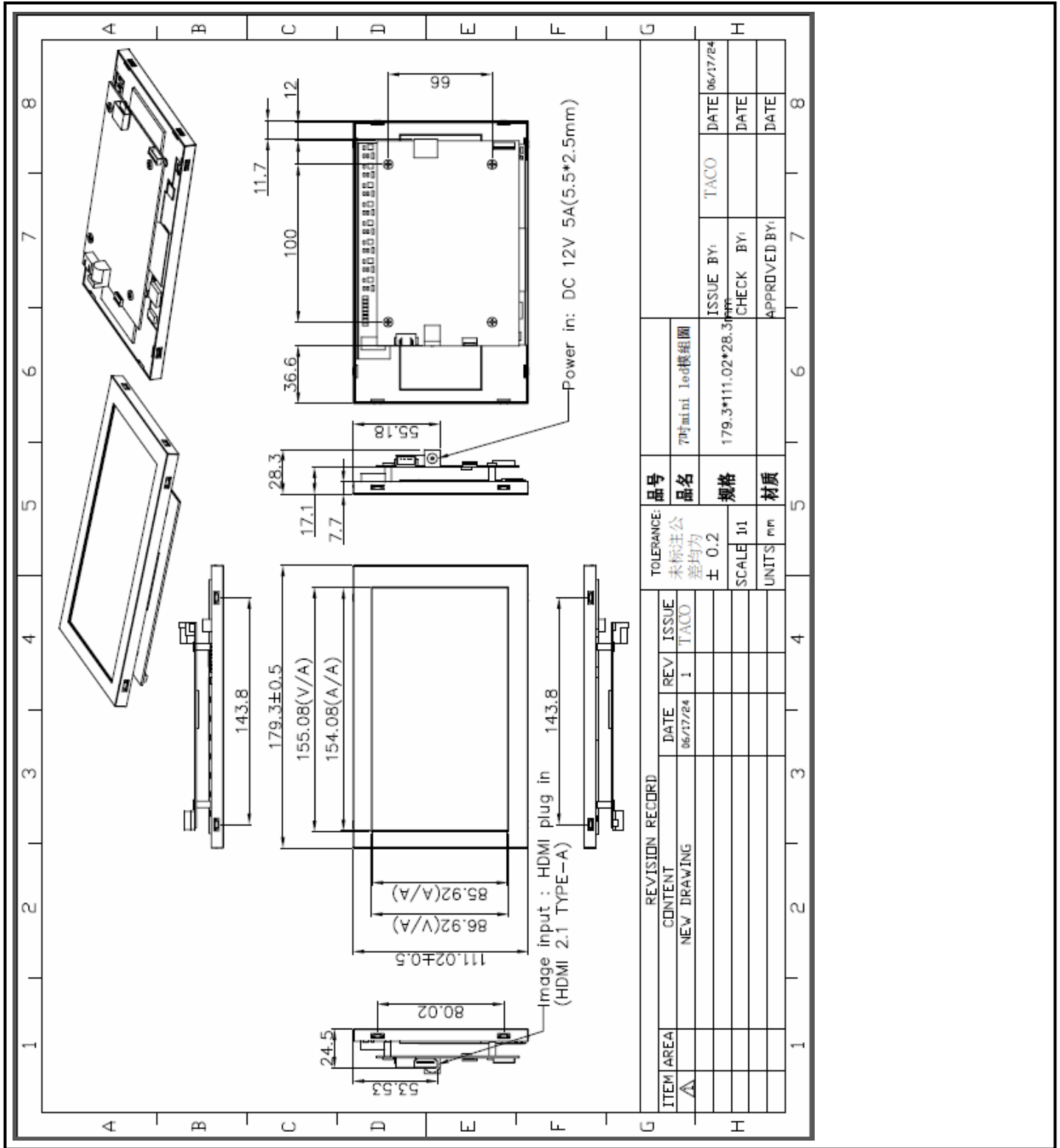
Optional components: OSD Keypad / Light Sensor / power adapter

### Product profile



### Perspective view





**Note on Intelligent Protection Mechanism:** This module is equipped with a proactive Over Temperature Protection (OTP) system. For Average Picture Level (APL) exceeding 70% for more than 240 seconds, brightness will adjust gradually (10% every 30s) to safeguard internal components. Recovery to 100% brightness is automatic once APL drops below 60%. This mechanism is a standard safety feature to ensure the LCM's extended lifespan and consistent performance under varying usage scenarios.