

## Mini-LED Display Module

### Features:

- High Brightness Level from 1,000 to 5,000 nits
- Display Size Available from 5" to 65"
- High Contrast Ratio: 100,000:1
- Lower Power Consumption: Reduced by 30% to 50%
- Sunlight Readable

**Part number:** EB156-ML9-Q3419A-18

**Product description:** 15.6" Mini-LED FALD Display Module

Local dimming zone: 960 zones

Brightness: 1800 nits

LCD: AHVA

Resolution: 1920x1080px, normally black

Viewing Angle: 85/85/85/85 (Typ.), CR≥10

Color depth: 16.7 M

Interface: LVDS

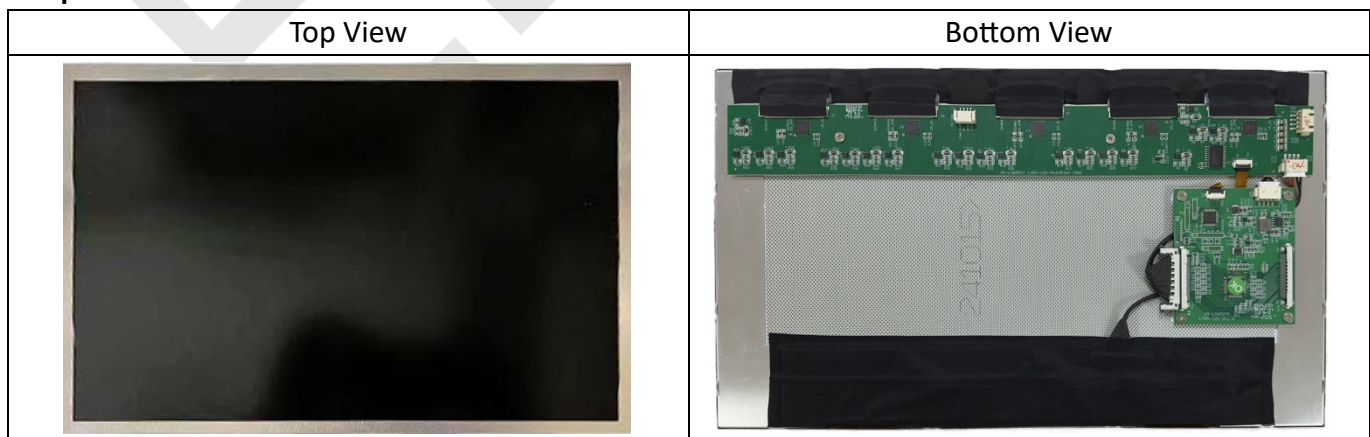
Operating temperature: -30°C ~ 80°C

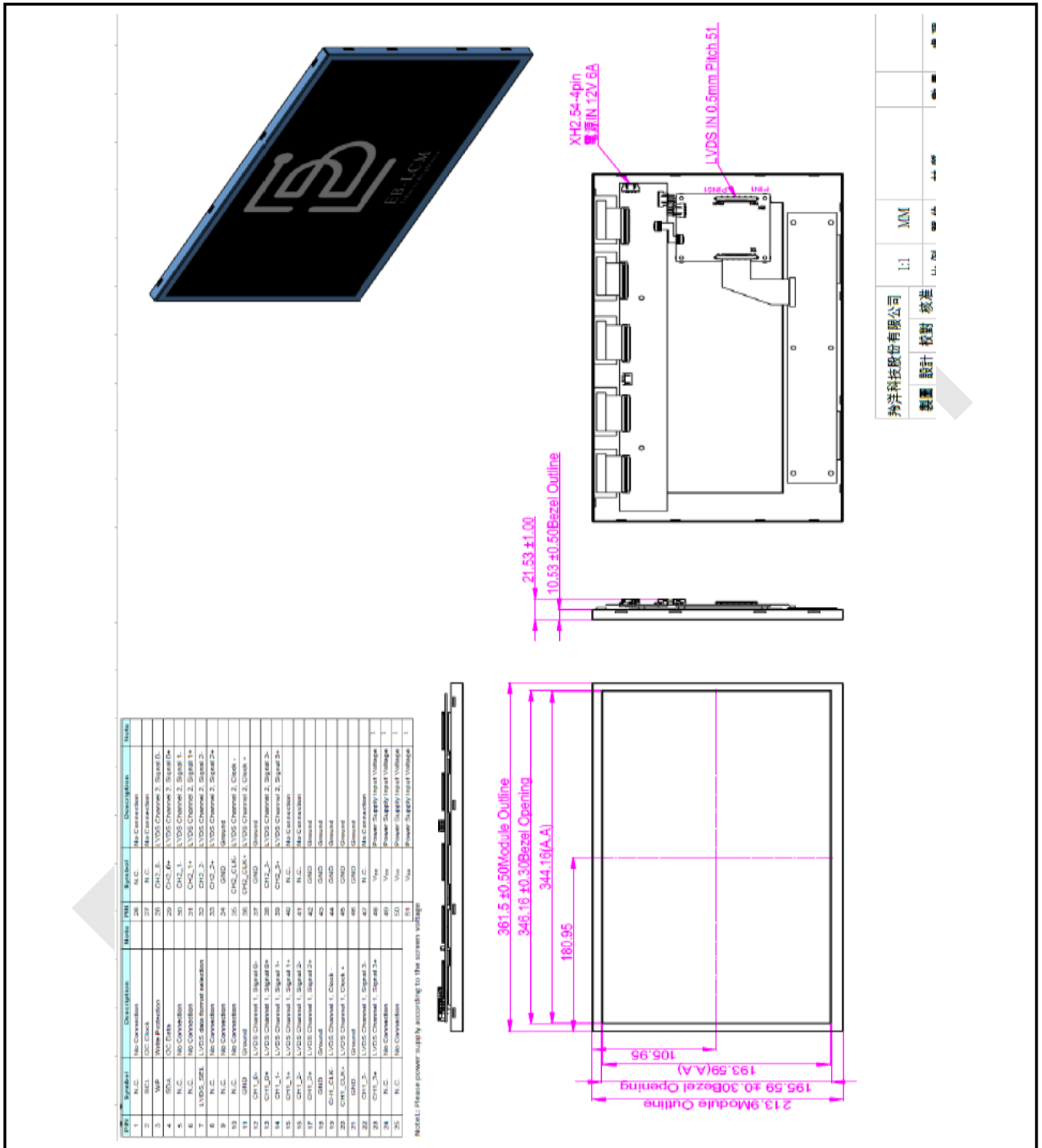
Storage temperature: -30°C ~ 80°C

### Product profile



### Perspective view





**Note on Intelligent Protection Mechanism:** This module is equipped with a proactive Over Temperature Protection (OTP) system. For Average Picture Level (APL) exceeding 70% for more than 240 seconds, brightness will adjust gradually (10% every 30s) to safeguard internal components. Recovery to 100% brightness is automatic once APL drops below 60%. This mechanism is a standard safety feature to ensure the LCM's extended lifespan and consistent performance under varying usage scenarios.